

Timber Talk

Timber is the versatile material at the very heart of many of our vernacular building traditions.

Following on from our 2018 Congress 'Everything Old is New Again' and our recent 2019 workshops in Pakistan, INTBAU will be hosting an evening of talks on timber: the bio-based building material which is revolutionising the industry on a global scale.

The talks will look at where new technologies in the timber industry and the derivations of this natural material are taking us from a design perspective. What are the benefits? How can timber buildings positively affect our mental health? How will shifting material limitations challenge our definitions of 'natural' and 'vernacular'? These are all questions we hope to answer.

Join us on 27 January 2020, for drinks from 6.00pm, with talks underway from 6.30pm.

The venue is 19-22 Charlotte Road,
Shoreditch, London EC2A 3SG

The event will consist of short talks from our speakers, followed by a question and answer session chaired by Christiane Lellig from Wood for Good. More information on speakers can be found below and on our [website](#).

Tickets can be purchased [here](#) on our website.

Speakers



Chair: Christiane Lellig, Campaign Director of Wood For Good

A specialist in behaviour change and sustainability communications, Christiane has led national research programmes and campaigns in various fields, ranging from environmental concerns to labour and social justice issues since 1999. She has co-founded two international organisations connecting marketing and behaviour change professionals across the globe. As campaign director of *Wood For Good*, the timber industry's sustainability campaign Christiane promotes the use of wood in design and construction.



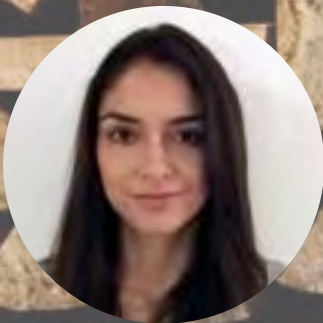
Richard Oxley: Chartered Surveyor and Director of Oxley Conservation, a historic buildings consultancy practice in Henley-on-Thames, est. 1997.

Richard's extensive surveying experience includes a full range of building types and he has an active interest in the traditional repair of old buildings. This includes the link between sustainability and traditionally constructed buildings. The practice is at the forefront of implementing retrofit improvements to enhance the thermal performance of traditionally constructed buildings. Richard is also actively involved in the Sustainable Timber Building Alliance ([STBA](#)).



Charley Brentall: Director of Xylotek and founder of Carpenter Oak

With work spanning four decades and on four continents, Charley is an internationally recognised leader in timber construction and conservation. Since 1987, Charley has led the renaissance of timber framing in the UK through *Carpenter Oak Ltd.* and since 2000, his company Xylotek has gone further and embraced rapidly evolving new technologies, specialising in the design and delivery of advanced timber structures on an international level. With projects in countries ranging from Canada, the Scilly Isles to Uganda, the firm works with students, architects and engineers, connecting digital design, technology with an understanding of traditional carpentry techniques.



Antiopi Koronaki: Research Assistant, Centre of Natural Material Innovation, University of Cambridge

Antiopi is an architect engineer working as a Research Assistant at Cambridge, researching the application of engineered timber for school buildings in the UK. Her PhD research at the University of Bath focused on the geometry optimization of large-scale complex space-frame structures, through the development of advanced computational tools. Her research interests lie at the intersection of computational design, complex geometry, novel material systems and advanced fabrication techniques. She has taught extensively in higher Education Institutions in the UK, including the Architectural Association, and practised as a member of the bridge team of Wilkinson Eyre, London.



Andrew Carpenter: CEO, Structural Timber Association (STA)

For 40 years, Andrew has played an active part in the construction industry, focusing on business development, best practice and the sector's improvement agenda. Andrew joined the UK Timber Frame Association (UKTFA) in January 2011 and oversaw the rebrand to the Structural Timber Association in 2013. He is now the centre of the offsite construction agenda, whilst continuing to promote the capability of structural timber products and the capacity within the sector to help resolve the housing crisis. Since 1999, Andrew has been involved with the Government change agenda and is currently Chair of [BIM4Housing](#) together with managing the role of Chief Executive for Constructing Excellence for the South West and the Midlands regions.